

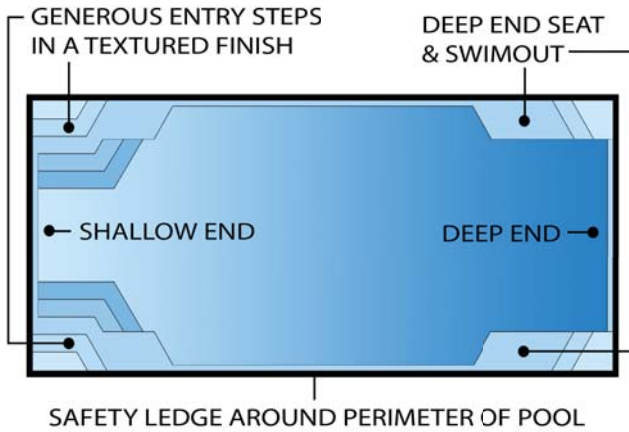
Palm Beach



The Palm Beach proves that size matters. Featuring four large entry points, bench seating, generous scale, and an ultra wide footprint, the Palm Beach will fit large and medium pool spaces. With a true mirrored layout the Palm Beach can be oriented in a right or left hand space and is a perfect choice for an automatic cover.

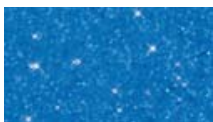
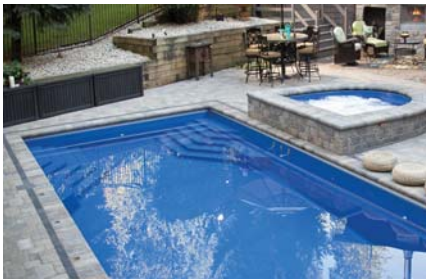


- Features & Benefits -

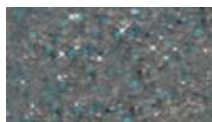


- 360 Degree access - Multiple orientation options
- Symmetrical design - Allows left or right orientation
- Large main swim lane - Great for swimming laps and games
- Large stair entry - Easy access to enter and exit
- Rectangular footprint - Ideal for automatic retractable safety covers
- Rectangular footprint - Increased value - More pool for your investment

	Size	Shallow	Deep
Palm Beach 31	31' x 16'	3' - 6"	6' - 5"
Palm Beach 35	35' x 16'	3' - 6"	6' - 6"
Palm Beach 40	40' x 16'	3' - 6"	6' - 10"



Sapphire Blue



Graphite Grey



Diamond Sand



Aquamarine



Crystal Blue



Outback Blue